



# AVAILABLE FOR LEASE

## Office Space

### PROPERTY DETAILS

- Available Now
- New Office Space
- Available SF - 1,203 SF
- Located in Baltimore's Midtown Submarket
- Less than a 10 minute walk to Baltimore's Penn Station
- Easy access on and off the JFX
- Located just across the street from The Ivy Hotel - rated the #6 Top Luxury Hotel in the US

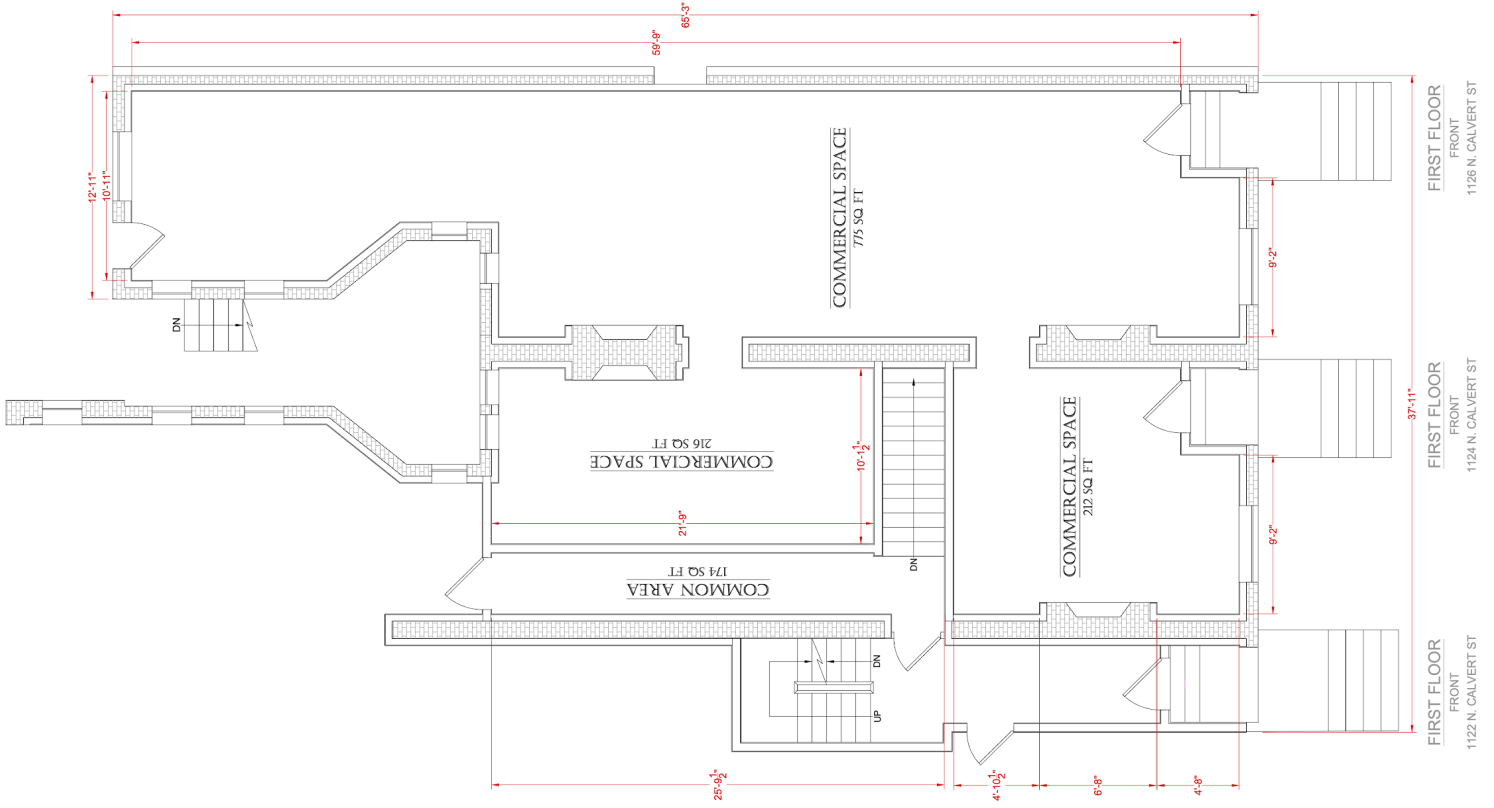
### Features Included

- Open Floor Plan
- Chevron Wooden Floors
- Exposed Brick
- Brand New Bathrooms
- Outdoor Patio
- Handicap Accessible
- Parking Available

For more leasing information, contact Drew Peace at [drew@chasencompanies.com](mailto:drew@chasencompanies.com) | 443.447.0988



The Calvert  
1122 North Calvert St  
Baltimore, MD



**TOTAL COMMERCIAL SPACE**  
1,203 SQ. FT.



The Calvert  
1122 North Calvert St  
Baltimore, MD